



**Map Key**

- Ramps -
- Restrooms -
- Area not in use -
- Entrance/Exits -
- Chair Lifts -

**Tingley Coliseum**

East Entrance

South Entrance

Gate 8

Parking

Handicap Parking

Staff Area, Not for Visitors

The Farm

Home & Creative Arts

Adventure Alley

The Food Court

African American Pavilion

Horse Complex

Palomino Barn

Manuel Lujan Jr. Exhibit Complex

Hispanic Arts

Natural Resources

Chevron Pavilion

Staff Area, Not for Visitors

Jr. Livestock Pavilion / Dairy Barn

Beef Barn

Youth Hall

Agriculture Building

Kiddie Lot

Main Street

Indian Arts

Beer Garden

Petting Farm

Fine Arts



The Midway (Rides and Games)

Staff Area, Not for Visitors

Indian Village

Villa Hispana

Staff Area, Not for Visitors

Pedestrian Gate

African American Performing Arts Center

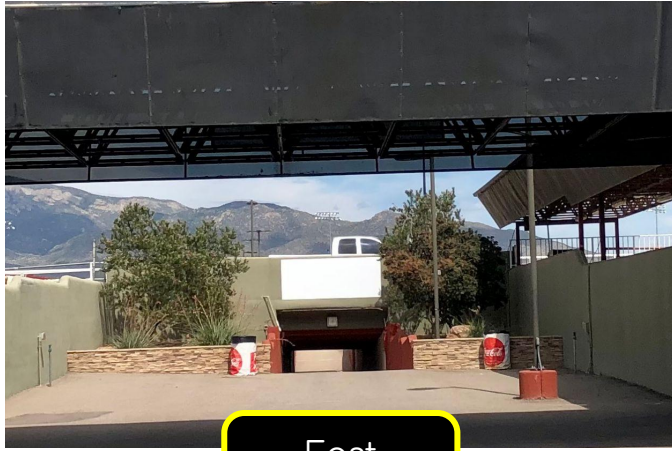
Copper

San Pedro Boulevard

Gate 4

Gate 3

# State Fair Entrances and Exits



East Entrance

Also called the infield or tunnel entrance. Can be accessed through gate 8, off of Louisiana Blvd.



South Entrance

Also called the main or red gate entrance. Can be accessed through gate 1, off of Central Blvd. **This is where the handicap parking is located.** (Valid placard required.)



West Entrance

Also called the pedestrian gate or purple awning entrance. Can be accessed through gates 3 or 4, off of San Pedro Blvd.



All entrances are also exits.



# State Fair Restrooms and Accessible Parking

## Accessible Parking

### South Entrance



Accessible parking is available at the South Entrance and can be accessed through gate 1, off of Central Ave. (Valid Placard is required.)



Accessible restrooms are located and labeled throughout the fairgrounds. Each one has an extra large stall. Soap dispensers can be difficult to reach from a wheelchair position, it is recommended to bring your own soap.

# State Fair Emergencies



The Medicine Bow is located at the entrance to the Midway and is open during the Fair for any medical concerns.

The tag your tot program will be available upon entry to the Fair and can be utilized for fairgoers of any age. (TYT station is located on Main Street and in front of the racetrack.)

For emergencies, please locate State Fair staff or a State Police Officer.



State Fair staff will be wearing black or grey shirts, and have a State Fair badge. Please find a staff member for any questions or concerns during your Fair visit,



# Cultural and Educational Exhibits



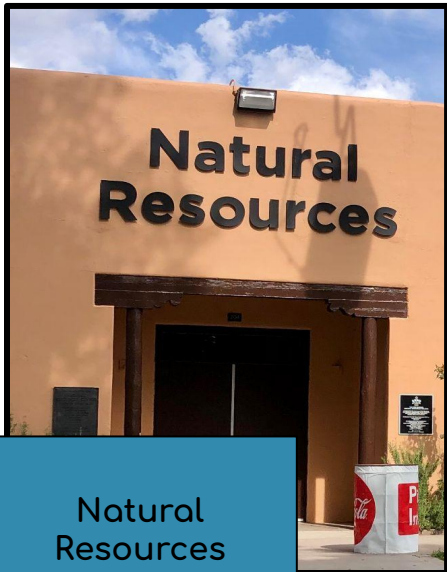
Indian Arts



Fine Arts



Agriculture Building



Natural Resources



School Arts



Hispanic Arts



# More Cultural and Educational Exhibits



## Manuel Lujan Jr. Exhibit Complex

Includes a variety of activities that can change daily such as Mind Works!, Chef Laundry's Show and a wide variety of vendors.



## Villa Hispana



These areas will include cultural performance, food and various vendors.

## Home & Creative Arts



Displays of NM crafts such as, 3-D art, quilting, ceramics, jewelry, woodwork, legos, and so much more!

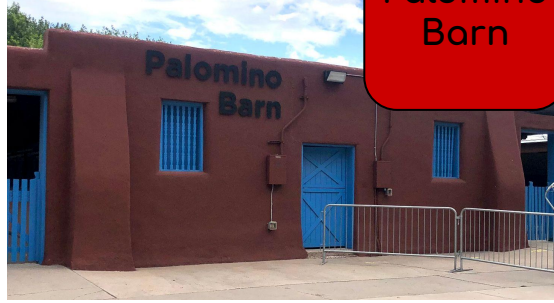


## Native American Village





# Barns and Arenas



Palomino Barn



Horse Complex



Jr. Livestock Pavilion



Beef Barn



Dairy Barn



Red Barn





# Activity Areas



Petting Farm

Youth Hall

Sensory Station inside. Duck Races located in the courtyard out front.

Sea lion show.

Kiddie Lot

The Farm

The Midway  
(Rides and Games)

Long Line Area

Tablet or Wait Cards Recommended



# Stages and Other Areas



African American Pavillion



Chevron Pavilion



Boxcar Stage



Chair Lifts  
Chair Lifts operate, overhead, on the east side of Main Street.



**Main Street Stage**

Includes Jason D'Vaude and more.



**Main Street**

Includes a variety of activities, foods, and sounds that can change daily.



**The Food Court**

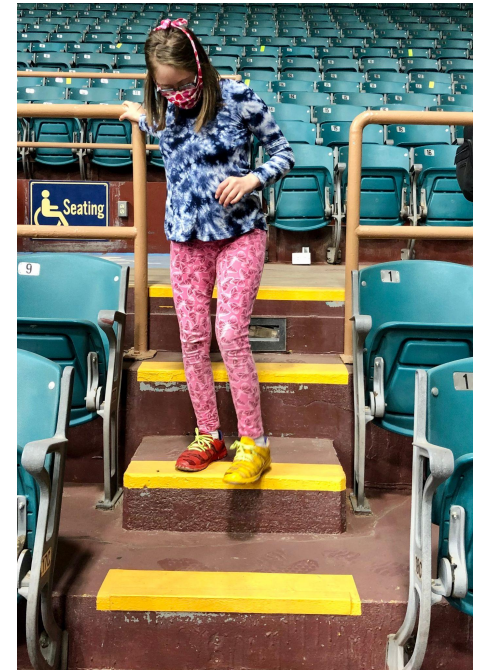







# Tingley Coliseum

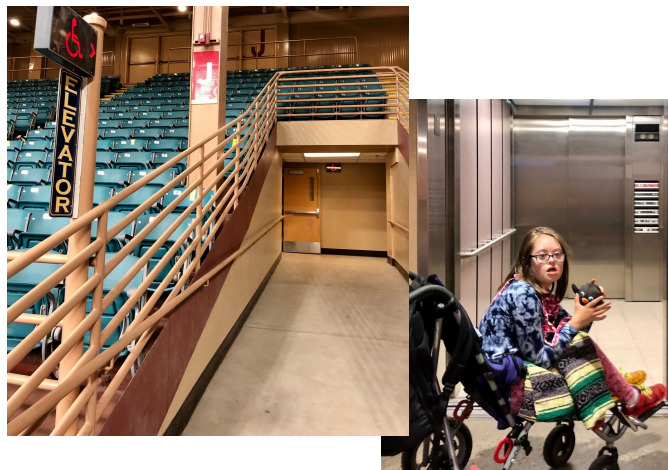
Tingley Coliseum is where all State Fair rodeos and rodeo/concerts will happen. It is also a space to wait out any weather concerns.



Numbered-section stairs are steep and may require assistance.



Handicap seating is located on the west side of the building. For more information or to reserve seats, call (505) 339-4786.



Elevators make seats accessible to all.







Relax, Reset,  
Return to the Fair.



The

# Inclusion Program

Inclusion. Accessibility. Belonging.

By:  Parents Reaching Out